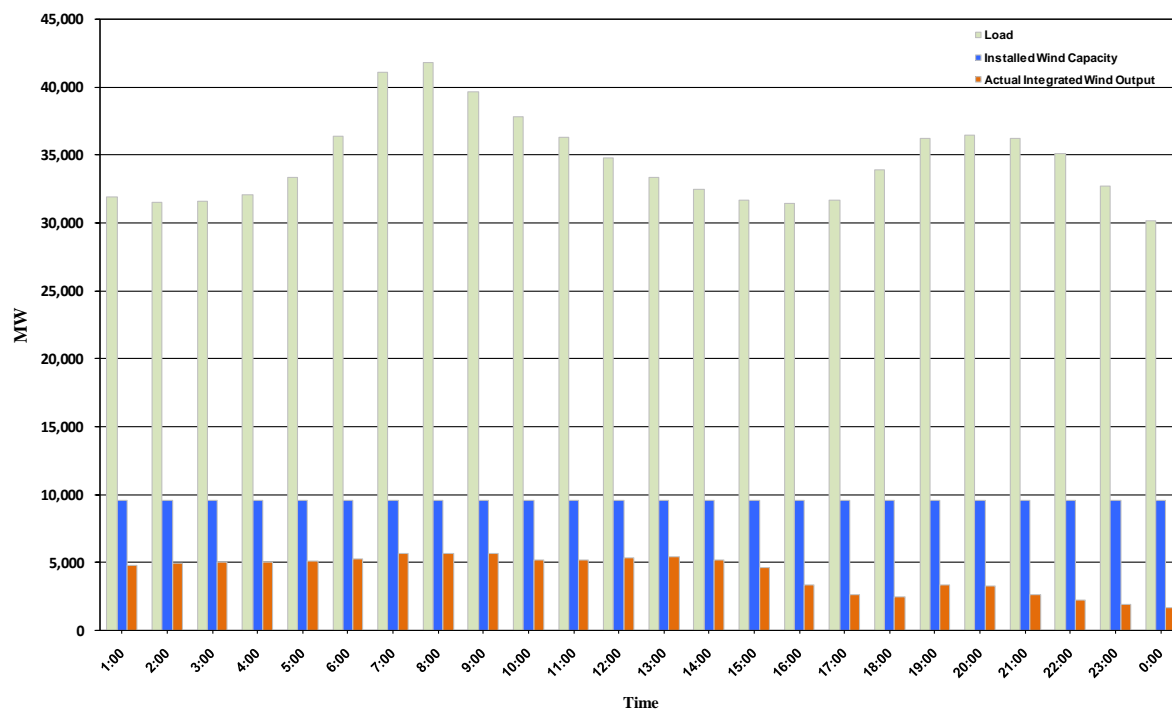




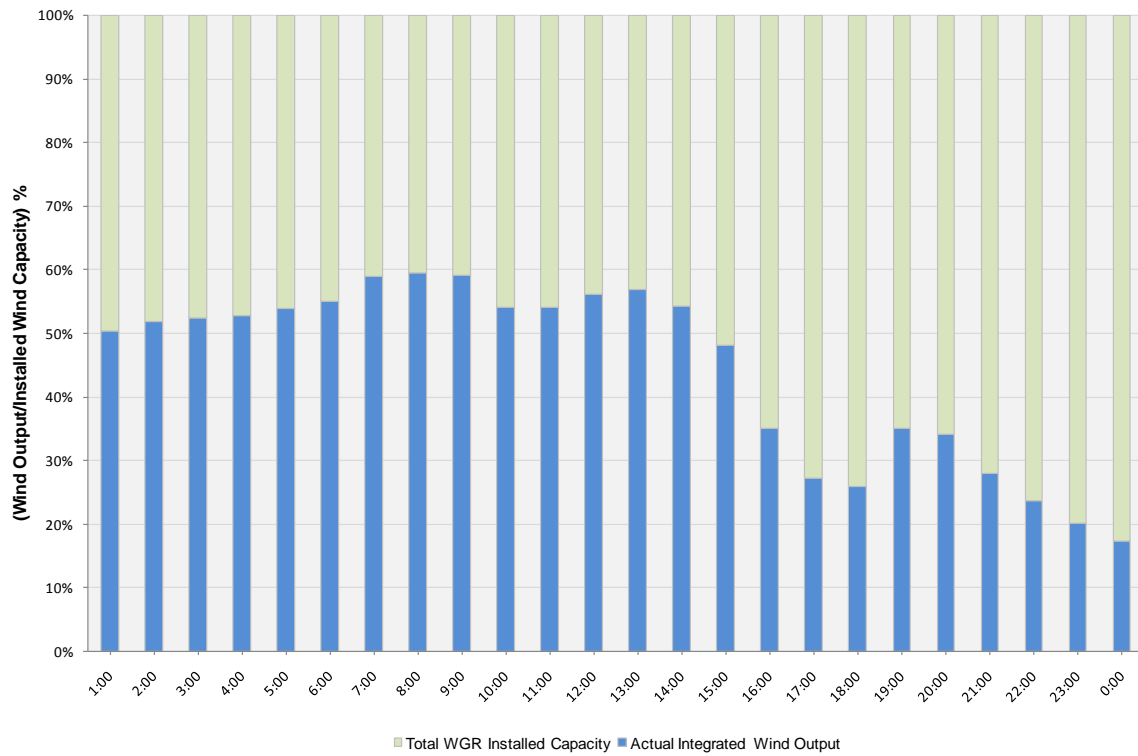
## ERCOT Grid Operations Wind Integration Report: 12/09/10

Peak Load	<b>41,780 MW</b>
Load Peak Hour	<b>08</b>
Wind Record 06/12/10	<b>7016 MW</b>
Max Wind value	<b>5995 MW</b>
Wind Peak Hour	<b>06:22:00</b>
Wind Integration %	<b>14.65</b>

Hourly Average Actual Load vs. Actual Wind Output  
12-09-2010



**Actual Wind Output as a Percentage of the Total Installed Wind Capacity**  
**12-09-2010**



**Actual Wind Output as a Percentage of the ERCOT Load**  
**12-09-2010**

